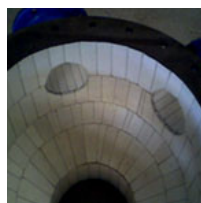
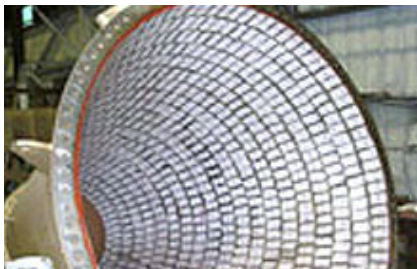


TUFF STUFF Technical Data Sheet



Ceramic Tile Adhesive Trowellable Heavy Duty Thixotropic Epoxy Adhesive

Ceramic Tile Adhesive can be used to bond a wide range of materials to themselves and other materials. Typical applications include installation of wear plates and alumina ceramic tiles in mineral processing equipment and bonding of rubber and polyurethane parts to metal and fibre glass structures.

It can also be used as a repair putty/gap filler in non critical applications.

- Bonds a wide range of materials
- Easy application
- Fast cure time
- Not regulated for transport

Ceramic Tile Adhesive is a two pack, 100% solids epoxy which has a paste like consistency when mixed. This enables parts to be bonded with minimum clamping. Parts to be bonded should be suitably prepared e.g. by abrading and/or solvent cleaning. The two adhesive components should be placed on a mixing board and mixed using a spatula or trowel until a uniform white colour is obtained. The mixed adhesive is now applied to the prepared surfaces using a notched trowel or spatula. The two surfaces are now mated together with clamping if required ensuring that excess material flows from the bond line. The assembly is allowed to cure for at least 12 hours at 25°C.

PROFILE			
Colour	Part A Off white	Part B White	Mixed White
Mix Ratio (by weight)	2	1	
Potlife (100g)			60 minutes
Thin film gel time			4 hours
Specific gravity	1.65	1.55	1.61
Coverage at 1000 microns			0.6m ² /kg

TECHNICAL SPECIFICATIONS	
Tensile Bond Strength:	12 MPa
Ultimate Compressive Strength:	80 Mpa
Flexural Strength:	15 MPa
Tensile Strength:	25 MPa

TESTING OF THIS PRODUCT IS STRONGLY RECOMMENDED TO CONFIRM SUITABILITY FOR SPECIFIC APPLICATIONS

Mining Products

- Wear Protection • Equipment & Machinery
- Drilling and Blasting • **Engineering Plastics**
- Consumables • Safety